



## **Schletter Solar Mounting Systems** *Facade systems*



## 1 General



The Schletter PV mounting systems is designed as a **modular unit assembly system** with universally applicable **high-value components** (aluminium / quality steel) and usually enables the installer to install **any module in almost any mounting situation**. The system consists of many system components that have been well-proven for many years and is permanently completed by newly developed compatible components. Besides modularity and the selection of high-quality materials, we especially focus on supporting the installer with instructions, calculation programs, etc., **which save valuable time and help to avoid mistakes**.

According to your wishes, you will receive single components or completely compiled mounting sets according to the individual module arrangement.

**A complete system structural analysis in the form of charts and programs** is available for the whole system, giving mounting guidelines and protecting the installer from any liability claims in case of damage. Besides the main components (roof hooks, cross beams, etc.) the system structural analysis also includes special fixation elements and dimensioning programs for systems and is also permanently updated and completed.

**State-of-art manufacturing options grant a rational manufacturing of standard components, as well as swift and flexible realization of special constructions on customer request.**

**Our welding procedures are certified according to DIN 18.800 (welding standard for supporting structures).**

The quality supervision is carried out according out DIN ISO 9001:2000. Being a founding member of the RAL-Solar, we also promote a company-independent, overall further development of quality standards and a professional definition of interfaces between the areas of competence.

**We grant a voluntary 10-year warranty on our system components.**

**Further certifications of our systems are TÜV-Proof and VDE-GS, for example.**



### Important hints:

- In this brochure, the individual system components are briefly described. Further information on the individual components can be looked up in the component overview.
- Further information on the different systems is summed up in product sheets and application hints:

➔ This sign always hints to further documents

## 2 Facade fixation

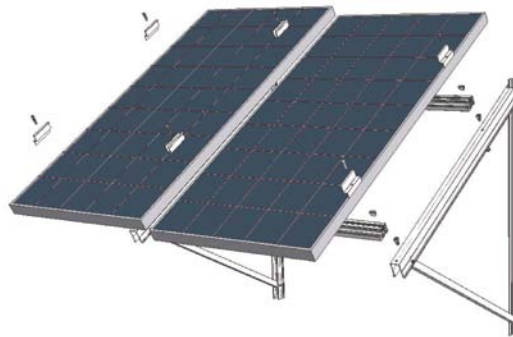
The facade fixation represents a special case of module mounting onto usually vertical walls. For plants in visible areas, also fixation elements with optional surfaces and colour designs (for example anodized or powder coated) can be delivered.

### Porch system

The porch system is a special form of façade mounting. Porch supports are mounted to vertical walls or façades (therefore often also called façade supports) and bear the cross beam profiles with the module rows.

**Concerning “overhead glazing”, please by all means pay regard to:**

- ➔ Façade mounting general application hints



**connector**


Dowels and screws

### Parallel facade

In certain cases, standard components can be used for mounting unframed modules or laminated modules to vertical walls or façades (bearing rails, module clamps, and screw anchor clamps for wall mounting).

**Concerning “overhead glazing”, please by all means pay regard to:**

- ➔ Façade mounting general application hints

Dowel clamp

Dowels and screws

