



Rapid²⁺ Grounding Middle Clamp

Features and Benefits

- Integrated module clamping and grounding
- Reduces mounting time
- Pre-assembled and ready to use
- Rated to 10 AWG*
- ETL Listed

For improved installation ease and cost reduction, Schletter now offers the Rapid²⁺ Grounding Middle Clamp. The Rapid²⁺ Clamp is the quickest option for mounting modules to date, that includes integrated grounding as a standard feature.

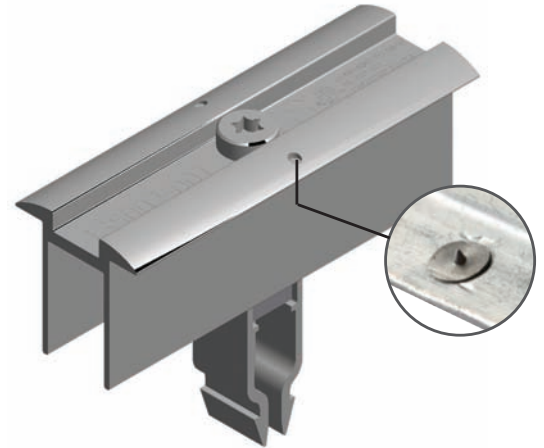
Pre-assembled as a standard stock item, the Rapid²⁺ Clamp is available in a variety of sizes, accommodating the industry's various module thicknesses. As with all Schletter components and systems, we offer a voluntary 10-year warranty.

For more information on this, or other Schletter products, please contact us at (520) 289-8700 or visit www.schletter.us.

Ordering Information

135002-001
 (430 821)

Grounding Middle Clamp: Rapid²⁺ 40–50 mm Assembled
 Similar to 131003-001, however with grounding function



Step One:

The Rapid²⁺ Grounding Middle Clamp is pre-assembled for quick installation. Position clamp over mounting rail and insert pointed clamp end into rail groove.



Step Two:

Tighten the Rapid²⁺ Grounding Middle Clamp using a standard drill, using a torque of no more than 10.5 ft-lbs. The size bit used to tighten the clamp is TORX TX-40. Use of a hammer drill is not recommended.



Installer is responsible for verifying that installation meets applicable NEC guidelines.

Always follow safety procedures when installing any racking system.