

## FS Uno

- Conforms to UL SUB 2703<sup>1</sup> and is Certified to ULC/ORD Std C1703 (Ed. 1)
- G165 galvanized steel mounting system for added durability
- Ideally suited for utility-scale installations
- Increased distances between foundation supports further aides in cost reduction
- G210 galvanized steel posts for extended product longevity



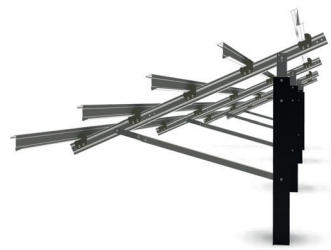
The FS Uno is a rugged all steel structure designed to meet the demanding conditions of large commercial- and utility-scale photovoltaic (PV) ground mount installations. With decades of engineering and manufacturing experience backing Schletter's latest ground mount product line, our customers can be confident they are receiving a quality product at a highly competitive price.

Through extensive analysis and design, Schletter engineers developed a single post system which can install in the traditional south-facing orientation or with a unique east-west orientation for difficult layout situations. Regardless of the design specifications, FS Uno upholds the quality standards for which Schletter is known.

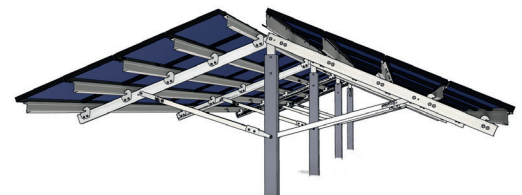
All of Schletter's solar mounting systems are built to withstand years of relentless environmental conditions. In order to meet such expectations, the FS Uno uses only high quality galvanized steel. The result is a steel solar mounting system designed to outlast the competition without compromising quality or safety.

### What to Expect from Schletter

- When other mounting providers say it can't be done, with Schletter, it can
- 100% IBC 2006, 2009, 2012 code compliant systems, with PE wet stamps available in most states
- Exceeding the competition in providing quality steel and aluminum products
- Team of engineers offering full in-house services
- In-house geotechnical services
- Over 20-years solar mounting engineering and manufacturing experience

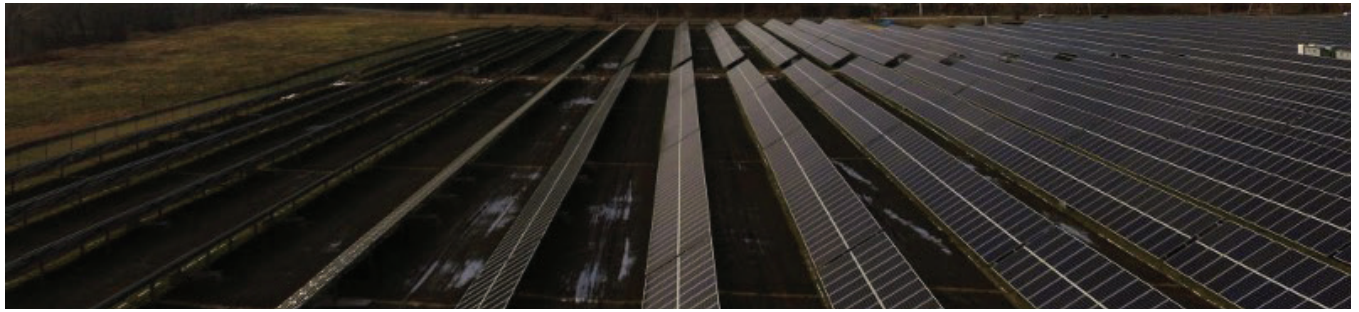


FS Uno South Facing



FS Uno-100 East-West Facing

<sup>1</sup> Grounding & Bonding (UL Subject 2703), identified with ETL Listed Mark and tested with specific modules. See FS Uno installation manual for complete list. See Intertek® ETL Listed Directory for more information.



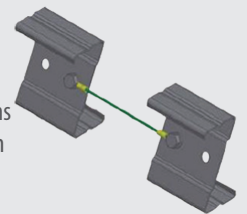
### Quick, On-Site System Installation

- Foundation posts are quickly installed using GAYK hydraulic ram
- Foundation head is attached to foundation post with two bolts
- Girder is connected to foundation head with one bolt
- Unfold the strut and connect to foundation post with one bolt
- Module rails attach securely with connector hooks
- Modules connected using adapted versions of Schletter's grounding **Rapid5K™** Module Clamps

### Connect Multiple Racks

For PV installations with more than one mounting system, electrically bonding individual racks is easy and affordable with Schletter's Bonding Jumper.

- Connects directly to purlin
- Available in 6-inch to 48-inch lengths
- Electrically bonds adjacent systems forming a continuous ground path



### Technical Data

<b>Foundation Options</b>	Galvanized steel, G210 coating, ASTM A653
<b>Purlin and Mounting Superstructure</b>	Galvanized steel, G165 coating, ASTM A653
<b>Module Layout</b>	Portrait and Landscape
<b>Module Compatibility</b>	See installation manual for approved module list for UL Ed.1 requirements
<b>Cable Management</b>	Purlin integrated component materials available. Combiner box attached to post, not integrated with the purlin also an option.
<b>Structural Design Standards</b>	IBC 2003-2015 (ASCE 7-05, ASCE 7-10) with local amendments National Building Code of Canada compliant PE Wet Stamps available
<b>Testing and Certifications</b>	Wind Tunnel Validation Conforms to UL 2703 Certified to ULC/ ORD Std C1703 (Ed. 1)
<b>Warranty</b>	20 year limited manufacturer warranty, standard
<b>Country of Manufacture</b>	United States of America

As with Schletter's FS System, the FS Uno foundation posts (included in mounting system) can be installed using the GAYK hydraulic ram for quick installation of the system posts.

Schletter stands behind the quality, durability, and functionality of its products and services its customers with professionalism. For United States, visit [www.schletter.us](http://www.schletter.us) or call **888-608-0234** or for Canada, please visit [www.schletter.ca](http://www.schletter.ca) or call **519-946-3800** to speak to a Schletter representative for more information.



**SCHLETTER GMBH (Headquarters)**

Gewerbegebiet an der B15  
Alustraße 1  
83527 Kirchdorf / Haag i.OB  
DEUTSCHLAND

**SCHLETTER (Shanghai)  
Solar Technology Co., Ltd**

677 Beihe Gong Road  
Jiading, Shanghai  
201807 PR CHINA

**SCHLETTER Inc.**

1001 Commerce Center Drive  
Shelby, North Carolina 28150  
USA

**For more information, contact  
a Schletter representative:**

U.S.: (888) 608 - 0234  
Canada: (519) 946 - 3800

**[Info.us@schletter-group.com](mailto:Info.us@schletter-group.com)  
[www.schletter.us](http://www.schletter.us)**