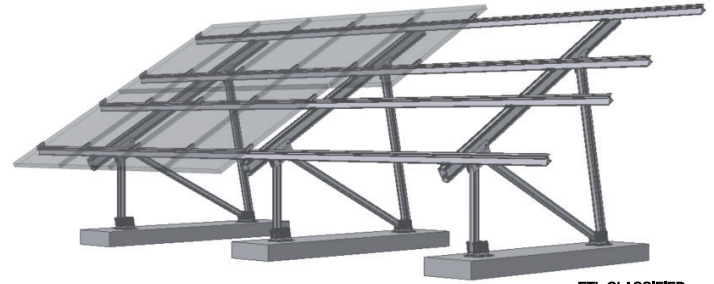


PvMax

Aluminum ballasted photovoltaic ground mount system

- Concrete ballast ground mount system, connects to pre-cast, cast-in-place, or ground screw foundations
- Conforms to UL 2703 and is Certified to ULC/ORD Std C1703¹
- Ideal for landfill sites or residential locations
- Complete structural analysis provided, including foundation calculation with attachment recommendation
- Short mounting time with partially pre-assembled support kits and no heavy machinery required
- Proprietary S-Profile rail allows for long spans, reducing the required number of supports and concrete foundations needed



The PvMax is a ballasted ground mount system which offers an attractive design with long-lasting and durable system components. The system offers photovoltaic (PV) mounting solutions in areas where pier driven posts are not possible, as is the case in residential locations or on landfill sites.

The core strength of the PvMax lies in the large spans achieved using the uniquely designed S-Profile rails. The S-Profile rails enable long spans, resulting in a low number of required supports, thereby reducing the number of concrete foundations needed. Made of aluminum, the PvMax is easily installed requiring no heavy machinery.



Applications

Using cast-in-place concrete block foundations, the PvMax is ideal for:

- Small and medium-sized PV systems
- When pile driven posts are not possible (e.g., sites where soil is too soft or too rocky, landfill sites, or inaccessible locations)
- Repeatable residential ground-mount installations

For United States, visit www.schletter.us or call **888-608-0234** or for Canada, visit www.schletter.ca or call **519-946-3800** to speak to a Schletter representative for more information.

PV Powersite

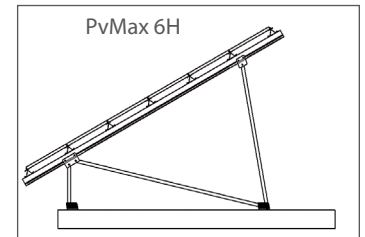
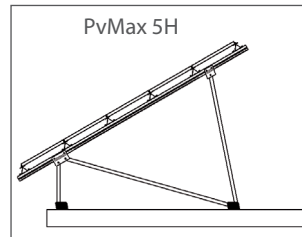
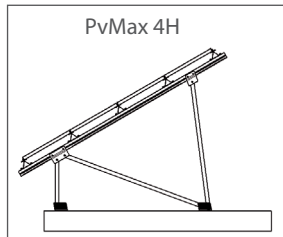
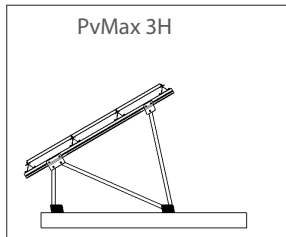
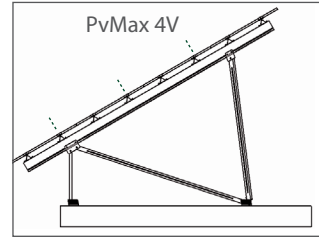
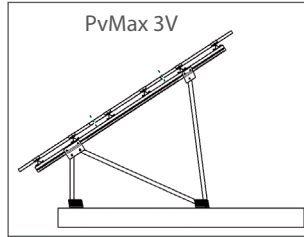
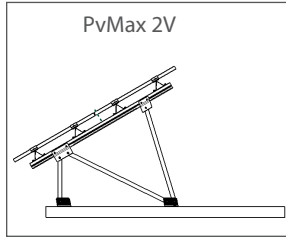
Order PvMax online at www.pvpowersite.com!

Ideally suited for projects of 50 kW or smaller in size, using 60 or 72 cell modules, the PV Powersite makes ordering convenient and fast. Users are provided with a permit-ready package which includes:

- Structural acceptance letter
- System drawings
- Parts list

¹ The PvMax is evaluated for electrical bonding only. The PvMax meets all IBC and ASCE requirements for structural loading; it was not evaluated for loading under UL 2703.

Mounting Options



Technical Data

Foundation Options	Concrete: Cast-in-place or pre-cast concrete Other: compatible with ground screws, pending engineering review
Fixed Tilt Angles	15–35°
Purlin and Mounting Superstructure	Aluminum, 6105, T5
Module Layout	Portrait or landscape
Module Compatibility	See installation manual for approved module list for UL Ed.1 requirements. For modules not on list, contact your Schletter representative.
Cable Management	S-Series profiles: ProKlip-Q (129012-001) and ProKlip 2000-P (129012-002), snaps onto lower edge of purlins
Structural Design Standards	IBC 2006, 2009, 2012, or 2015 (ASCE 7-05, ASCE 7-10) with local amendments National Building Code of Canada compliant PE Wet Stamps available
Testing and Certifications	Wind Tunnel Validation Conforms to UL 2703 Certified to ULC/ORD STD C1703
Warranty	20 year limited manufacturer warranty, standard
Country of Manufacture	United States of America



SCHLETTER GMBH (Headquarters)
Gewerbegebiet an der B15
Alustraße 1
83527 Kirchdorf / Haag i.OB
DEUTSCHLAND

SCHLETTER (Shanghai)
Solar Technology Co., Ltd
677 Beihe Gong Road
Jiading, Shanghai
201807 PR CHINA

SCHLETTER Inc.
1001 Commerce Center Drive
Shelby, North Carolina 28150
USA

(888) 608 - 0234
info.us@schletter-group.com
www.schletter.us